

VALUE OF CONSTRUCTION WORK PERFORMED
(New and Repair)



HOUSING

Year	Value (\$)
1952	1,029,000,000
1954	1,399,900,000
1956	1,830,400,000
1958	2,189,000,000
1960	1,943,700,000
1961	2,044,100,000



INDUSTRIAL AND COMMERCIAL

Year	Value (\$)
1952	962,164,000
1954	910,815,000
1956	1,175,371,000
1958	1,084,266,000
1960	1,149,706,000
1961	1,123,547,000

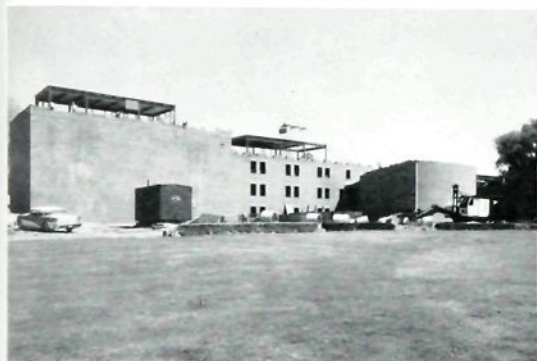


ROADS AND HIGHWAYS

Year	Value (\$)
1952	573,890,000
1954	473,424,000
1956	618,038,000
1958	711,854,000
1960	825,268,000
1961	814,898,000

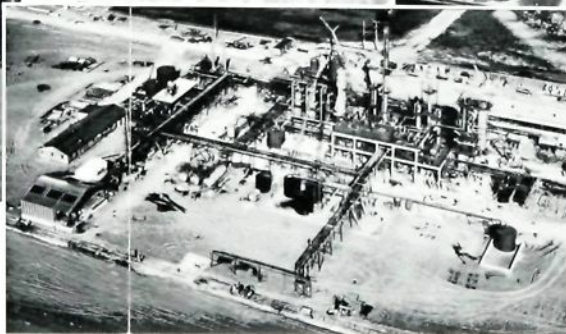
ALL CONSTRUCTION

Year	Value (\$)
1952	4,198,621,000
1954	4,723,367,000
1956	6,382,356,000
1958	7,092,481,000
1960	6,888,515,000
1961	7,131,989,000



INSTITUTIONAL

Year	Value (\$)
1952	419,738,000
1954	603,176,000
1956	812,485,000
1958	828,483,000
1960	919,135,000
1961	1,032,381,000



ENGINEERING

Year	Value (\$)
1952	330,134,000
1954	503,056,000
1956	874,440,000
1958	1,128,548,000
1960	908,661,000
1961	991,528,000

COMMUNITY SERVICES

Year	Value (\$)
1952	883,695,000
1954	832,996,000
1956	1,069,622,000
1958	1,150,331,000
1960	1,142,045,000
1961	1,155,144,000

